

RFID Console

INSTALLATION PROCEDURE

Legal Notices

Copyright ©2017-2019 SensThys Inc. All rights reserved.

SensThys has intellectual property rights relating to technology embodied in the products described in this document, including without limitation certain patents or patent pending applications in the U.S. or other countries. This document and the products to which it pertains are distributed under licenses restricting their use, copying, distribution and de-compilation. No part of this product documentation may be reproduced in any form or by any means without the prior written consent of SensThys Corporation and its licensors, if any. Third party software is copyrighted and licensed from Licensors. SensThys, SensArray and other graphics, logos, and service names used in this document are trademarks of SensThys in the U.S. and other countries. All other trademarks are the property of their respective owners. U.S. Government approval required when exporting the product described in this documentation.

Federal Acquisitions: Commercial Software -- Government Users Subject to Standard License Terms and Conditions. U.S. Government: If this Software is being acquired by or on behalf of the U.S. Government or by a U.S. Government prime contractor or subcontractor (at any tier), then the Government's rights in the Software and accompanying documentation shall be only as set forth in this license; this is in accordance with 48 C.F.R. 227.7201 through 227.7202-4 (for Department of Defense (DoD) acquisitions) and with 48 C.F.R. 2.101 and 12.212 (for non-DoD acquisitions).

DOCUMENTATION IS PROVIDED "AS IS" AND ALL EXPRESS OR IMPLIED CONDITIONS, REPRESENTATIONS AND WARRANTIES, INCLUDING ANY IMPLIED WARRANTY OF MERCHANTABILITY, FITNESS FOR A PARTICULAR PURPOSE OR NON-INFRINGEMENT ARE HEREBY DISCLAIMED, EXCEPT TO THE EXTENT THAT SUCH DISCLAIMERS ARE HELD TO BE LEGALLY INVALID.

FCC Compliance

This equipment has been tested and found to comply with Part 15 of the FCC Rules. Operation is subject to the following two conditions: (1) This device may not cause harmful interference, and (2) this device must accept any interference received, including interference that may cause undesired operation.

Any change or modification to this product voids the user's authority to operate per FCC Part 15 Subpart A. Section 15.21 regulations.

Industry Canada Compliance

This device complies with Industry Canada License-exempt RSS standards. Operation is subject to the following two conditions: (1) this device may not cause interference and (2) this device must accept any interference, including interference that may cause undesired operation of the device. This device has been designed to operate with a variety of different gain (dBi). The reader maximum output power is set by the gain of the antenna. Using an antenna having a higher gain is strictly prohibited per regulations of Industry Canada. In addition, using the reader at a power exceeding the maximum output power for a given antenna is also strictly prohibited. The required antenna impedance is 50 ohms. To reduce potential radio interference to other users, the antenna type and its gain should be so chosen that the equivalent isotropically radiated power (EIRP) is not more than that required for successful communication.

Conformité d'Industrie Canada

Cet appareil est conforme aux normes RSS exemptées de licence d'Industrie Canada. L'opération est soumise aux deux conditions suivantes: (1) cet appareil ne doit pas provoquer d'interférence et (2) cet appareil doit accepter toute interférence, y compris les interférences susceptibles de provoquer un fonctionnement indésirable de l'appareil. Cet appareil a été conçu pour fonctionner avec une variété de gains différents (dBi). La puissance de sortie maximale du lecteur est définie par le gain de l'antenne. L'utilisation d'une antenne ayant un gain plus élevé est strictement interdite par règlement d'Industrie Canada. En outre, l'utilisation du lecteur à une puissance supérieure à la puissance de sortie maximale pour une antenne donnée est également strictement interdite. L'impédance d'antenne requise est de 50 ohms. Afin de réduire les interférences radio potentielles avec d'autres utilisateurs, le type d'antenne et son gain devraient être choisis de manière à ce que la puissance éloignée isotropiquement (EIRP) équivalente soit supérieure à celle requise pour une communication réussie.

Caution

Reader antennas should be positioned so that personnel in the area for prolonged periods may safely remain at least 31 cm (12.2 in) in an uncontrolled environment from the antenna's surface. See FCC OET Bulletin 56 "Hazards of radio frequency and electromagnetic fields" and Bulletin 65 "Human exposure to radio frequency electromagnetic fields."

Vorsicht

Reader Antennen sollten so positioniert werden, dass das Personal im Bereich über einen längeren Zeitraum kann sicher bleiben mindestens 31 cm (12.2 Zoll) entfernt von der Antenne Oberfläche, in einer unkontrollierten Umgebung. Siehe FCC OET Bulletin 56 "Gefahren der Radiofrequenz und elektromagnetische Felder" und Bulletin 65 "Human Exposition gegenüber hochfrequenten elektromagnetischen Feldern."

Revision History

Version	Author	Date	Changes
1.0	J. Major	August 2021	Initial Document

Table of Contents

LEGAL NOTICES	2
REVISION HISTORY	3
TABLE OF CONTENTS.....	4
RFID CONSOLE INSTALLATION	5

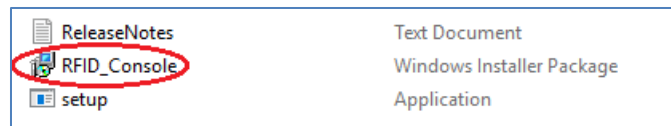
RFID Console Installation

This document details the menu screens that appear for the RFID Console on a Windows 10 installation.

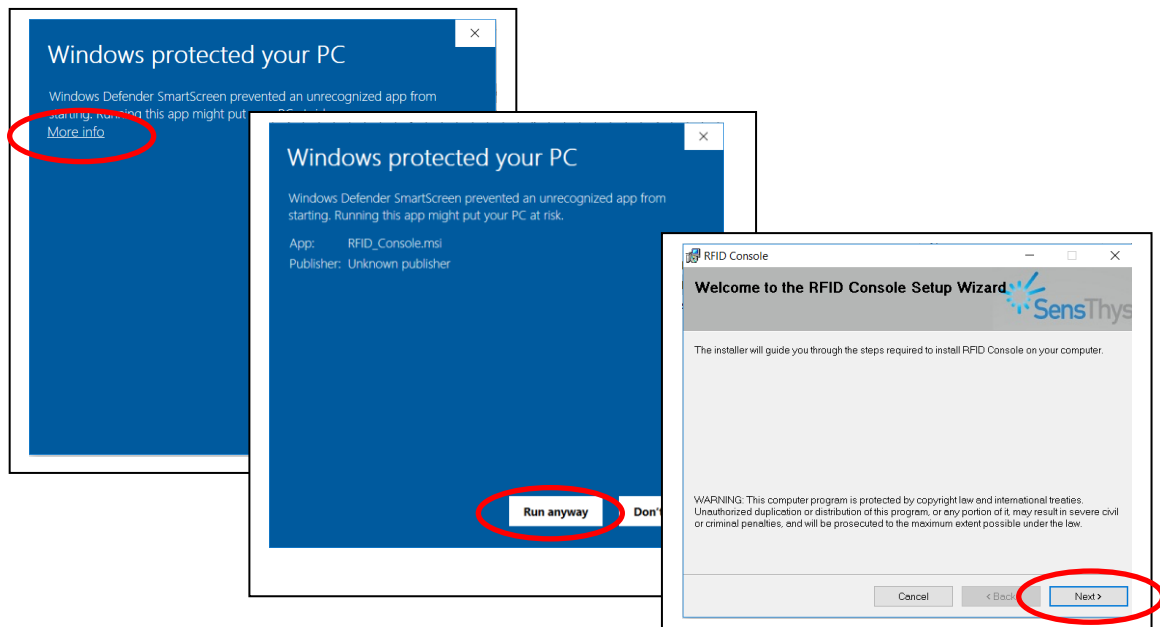
1. Download the RFID Console (.zip) from the SensThys Support website, and select “RFID Console”.

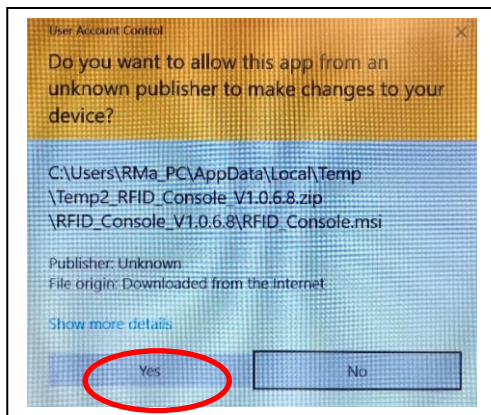
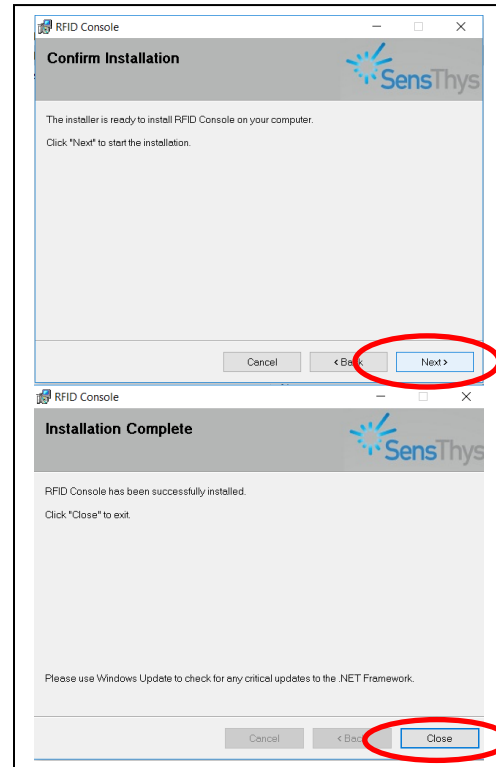
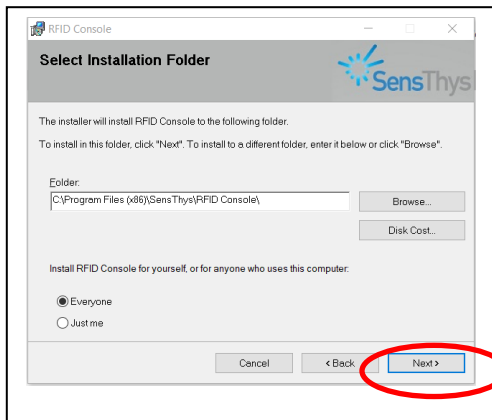
<https://www.sensthys.com/downloads/>

2. After you’ve downloaded the folder, you should see this...



3. The Installer will display the following screens. Follow the instructions to completion:





4. Start RFID Console. Use the convenient desktop icon.

For the first time, Windows Security Defender (Windows 10) will display warning that the Windows Defender Firewall has blocked some features of the RFID Console. For RFID Console to communicate with readers in the same subnet, the Firewall must allow the Console to access “Public Networks”. Click on “Allow Access”. RFID Console will now be able to find and populate the Reader List with readers in the same subnet.

