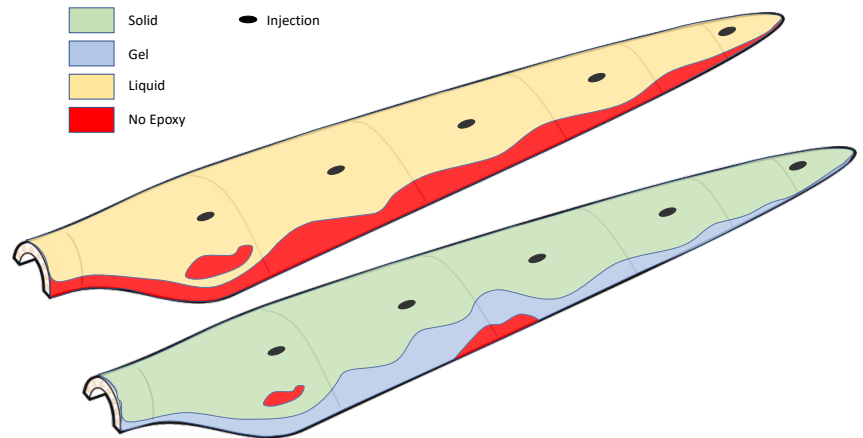
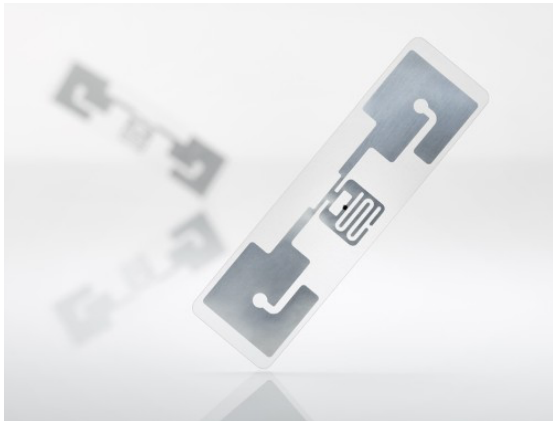
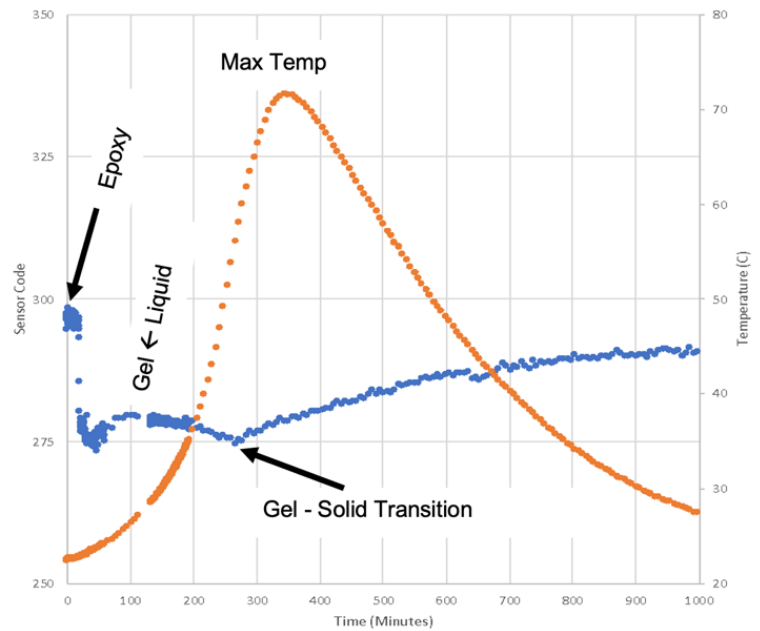


Directly Monitors

- Epoxy resin arrival
- Epoxy flow patterns
- Glass transition
- Local temperature
- Thermal gradients

Embedded Sensors

- No wires or batteries
- Paper thin
- Inexpensive
- Convenient remote monitoring



Why is This Important?

- Process monitors → Verify models, understand cure process
- Know when cure finished → Improves production efficiencies
- Full process mapping → Higher quality

<https://www.sensthys.com/sensors>

Neil Mitchell, neil.mitchell@sensthys.com, Cell 408-656-9500