

## CEO Note: Do You Need a Survivor?

A Series of Messages from our CEO... Jo Major

Some readers blend in (like our SensArray family) but some just need to survive, anywhere, in any conditions, inside or out. While protective NEMA boxes can be used to protect and provide cooling to a less robust reader, they are costly, need power to run fans, and become points of failure.

**In fact a NEMA box, fan and power supply can easily be more than the price as the reader, doubling the materials cost and exacerbating the install headaches.**

### A Reader That Just Works - ANYWHERE



The **Extreme** Reader:

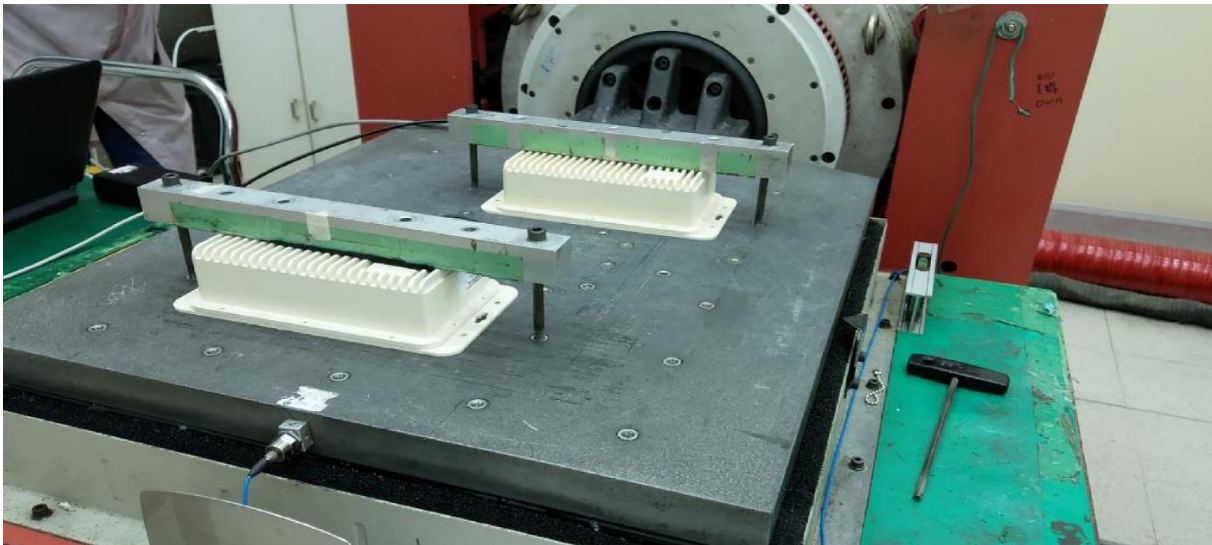
- No NEMA needed!
- Works in **Canadian winters** or **Australian summers**
- Designed to have **2000lb cows** or forklifts bashing against it
- Fine with **thermal shock**, heavy rain, sleet, or snow
- At home in **freezers**, chillers, and close to **ovens** and autoclaves

Tested:

- MIL-STD-810G **vibration** tested – Happy in military vehicles
- HERO certified for use around **munitions**
- IP67, just add IP67 connectors or weather wrap them for outside use

Wireless & location aware:

- Internal **WiFi** and Bluetooth/Bluetooth Low-Energy communications
- GPS built-in; **this reader knows where it is**
- Half the time this fixed reader is **vehicle/cart mounted** and **battery-powered!**
- Huge memory **buffers tags** until WiFi can be **reestablished** at the end of the day



Just a small range of applications this reader is used in:

- Remote fighter aircraft maintenance
- Cattle ranching
- Road construction
- Agricultural water management
- Mining
- Police vehicles
- Automated roof leak detection

***If you just want to stop worrying about whether your fixed reader will survive or need a wireless vehicle mounted solution, this is your reader!***

**Want Details On This Product?**

Learn more about *Extreme*?

Extreme